



DENTAL Systems 2021



New generation
of leading CAD/CAM technologies

www.imes-icore.de

 **imes-icore**[®]
competence in dental solutions

CORiTEC machine portfolio

The new generation of machines

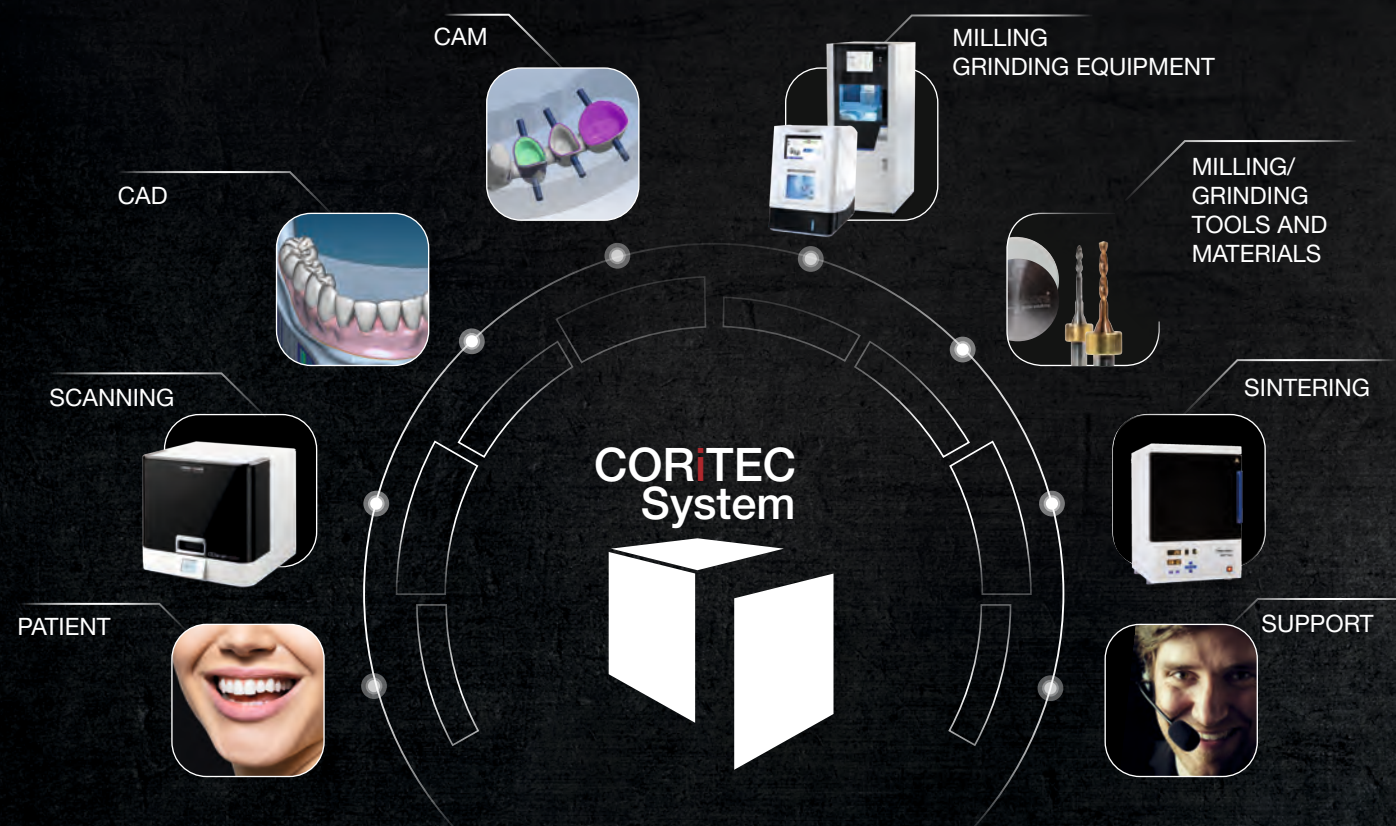


Technical data													
number of axes	4	5	5	5	5	5 + 1	5	5 + 1	5	5 + 1	5	5 + 2	5 + (6-axis-robot)
number of tool positions	6	10	10	12	16	20	20	20	32 (HSK 25)	20 (per machine)	1 kW 60.000 rpm	3,2 kW 50.000 rpm	1 kW 60.000 rpm
Pmax- maximum spindle speed	0.75 kW 100.000 rpm	0.75 kW 100.000 rpm	0.75 kW 100.000 rpm	0.4 kW 60.000 rpm	0.75 kW 100.000 rpm	1 kW 60.000 rpm	PRO: 1 kW 60.000 rpm PRO+: 2.6 kW 60.000 rpm	AC-servo drives with absolute encoder	Linear-/ torque drive, Absolute length measuring systems	AC-servo drives with absolute encoder			
axle drive	microstep drives	microstep drives	microstep drives	microstep drives	microstep drives	AC-servo drives with encoder	AC-servo drives with absolute encoder	AC-servo drives with absolute encoder	AC-servo drives with absolute encoder	AC-servo drives with absolute encoder			
blank change/number of blank holder	manual 1-3-times block material	manual 1-3-times block material	manual 1-fold blank holder	manual 1-fold blank holder	automatic up to 6 blank holder	manual 1-fold blank holder	automatic up to 12 blank holders	manual 1-fold blank holder	automatic up to 16 blank holders	manual 1-fold blank holder	automatic up to 21 blank holder per machine		
zero point clamping system	-	-	-	-	✓	optional	✓✓	✓✓	✓✓	✓✓	✓✓	✓✓	✓✓
dry processing	✓✓	✓✓	✓✓	✓✓	✓✓	✓✓	✓✓	✓✓	✓✓	✓✓	✓✓	✓✓	✓✓
wet processing	✓✓	✓✓	-	✓✓	✓✓	✓✓	✓✓	✓✓	✓✓	✓✓	✓✓	✓✓	✓✓
blank processing 98/98,5mm	-	✓✓	✓✓	✓✓	✓✓	✓✓	✓✓	✓✓	✓✓	✓✓	✓✓	✓✓	✓✓
block processing (CAD/CAM blocks)	✓✓	✓✓	✓ (dry)	✓✓	✓ (dry)	✓✓	✓✓	✓✓	✓✓	✓✓	✓✓	✓✓	✓✓
base structure	aluminium cast	aluminium cast	aluminium cast	granite / aluminium / steel	aluminium cast	aluminium / steel	aluminium / steel	aluminium / steel	polymer concrete / steel	granite / steel	polymer concrete / steel		
Materials													
zirconium oxide / aluminium oxide	✓	✓	✓✓	✓✓	✓✓	✓✓	✓✓	✓✓	✓✓	✓✓	✓✓	✓✓	✓✓
PMMA / resins / PEEK / composite / wax	✓	✓	✓✓	✓✓	✓✓	✓✓	✓✓	✓✓	✓✓	✓✓	✓✓	✓✓	✓✓
glass ceramics / hybrid ceramics	✓✓	✓✓	-	✓✓	-	✓✓	✓✓	✓✓	✓✓	✓✓	✓✓	✓✓	✓✓
sintering metal	✓	✓	✓	✓	✓	✓	✓	✓	✓	✓	✓	✓	✓
chrom cobalt	✓*	✓*	✓*	✓*	✓*	✓**	✓	✓	✓	✓	✓	✓	✓
titanium	✓*	✓*	-	✓*	-	✓**	✓	✓	✓	✓	✓	✓	✓
Applications													
copying / crown / inlay / onlay	✓✓	✓✓	✓✓	✓✓	✓✓	✓✓	✓✓	✓✓	✓✓	✓✓	✓✓	✓✓	✓✓
bridges up to 3 units	✓✓	✓✓	✓✓	✓✓	✓✓	✓✓	✓✓	✓✓	✓✓	✓✓	✓✓	✓✓	✓✓
bridges up to 14 units	-	-	✓✓	✓✓	✓✓	✓✓	✓✓	✓✓	✓✓	✓✓	✓✓	✓✓	✓✓
telescopic crowns	-	-	✓ (PEEK)	✓ (PEEK)	✓ (PEEK)	✓ (PEEK)	✓✓	✓✓	✓✓	✓✓	✓✓	✓✓	✓✓
therapeutic splints (bite splints)	-	-	✓✓	✓✓	✓✓	✓✓	✓✓	✓✓	✓✓	✓✓	✓✓	✓✓	✓✓
tooth models	-	-	✓✓	✓✓	✓✓	✓✓	✓✓	✓✓	✓✓	✓✓	✓✓	✓✓	✓✓
removable partials	-	-	✓✓	✓✓	✓✓	✓✓	✓✓	✓✓	✓✓	✓✓	✓✓	✓✓	✓✓
abutments on titanium adhesive basis	✓	✓	✓	✓	✓	✓	✓	✓	✓	✓	✓	✓	✓
prefabricated abutments of Ti / CoCr	✓	✓	-	✓	-	✓	✓	✓	✓	✓	✓	✓	✓
one-piece abutments (Zr, resins)	✓	✓	✓	✓	✓	✓	✓	✓	✓	✓	✓	✓	✓
one-piece abutments (CoCr, titanium)	-	-	-	-	-	-	✓	✓	✓	✓	✓	✓	✓
bar structures / one-piece abutments bridges on implants	-	-	-	-	-	-	✓	✓	✓	✓	✓	✓	✓

✓✓ ideally suitable ✓ suitable - not available * prefab-abutments possible with adapter ** In preparation

The CORiTEC System

Optimally matched machines and consumables guarantee effective production processes and lead to a new quality awareness. From our more than 15 years of experience in the dental market, the 5th generation has now grown with a series of 10 different milling systems. This makes imes-icore GmbH the only company in the world to offer a solution optimally tailored to its customers for virtually every milling center, laboratory and practical size. In addition, we offer you not only individual components, but coordinated complete solutions, with which you already on the first day process-reliable production chain with the CAD/CAM system. For these complete solutions you can always contact our support.



CONTENTS

CORiTEC machines

- 06** The CORiTEC system
- 08** CORiTEC one
The intelligent Practice Lab Solution
- 10** CORiTEC one+
The extended chairside milling system
- 12** CORiTEC 150i dry **eco**/150i dry/150i **PRO**
The flexible milling system in confined spaces
- 14** CORiTEC 250i dry/250i
The proven 5-axis system
- 16** CORiTEC 250i Loader **PRO**
Automation in the smallest space
- 20** CORiTEC 350i/350i Loader
The automated all-in-one solution
- 22** CORiTEC 350i **PRO**/350i Loader **PRO**
The professional solution for highest demands
- 24** CORiTEC 350i **PRO**⁺/350i Loader **PRO**⁺
The plus in performance
- 28** CORiTEC 650i/650i Loader
With future-oriented technology
- 30** CORiTEC 350i **PRO** robot
Fully automated in perfection

CORiTEC software

- 32** CORiTEC SmartControl™
SmartControl of machine software
- 34** CORiTEC iCAM V5 smart
Smart High End cam solution with perfect flexibility
- 36** CORiTEC scanner
CORiTEC i3Dscan eco | i3Dscan **color** | i3Dscan **color HD**
- 37** 3shape dental-scanner
3shape E1 / E2 / E3 | D1000 | D2000
- 38** CAD software
Software solution by exocad and 3shape

CORiTEC machine accessories

- 40** CORiTEC Sintering furnaces
iSINT eco | iSINT **PRO** | CORiDRY
- 41** Special solutions with technology partners
CORiTEC 650i for hybrid processing
- 42** CORiTEC vacuum systems
iVAC silent | iVAC silent **PRO** | iVAC eco+ | iVAC **PRO**⁺
- 43** CORiTEC machine tables
machine table T0 | T1 | T2
- 44** Cutters & grinders
3 mm shaft
- 46** Cutters & grinders
6 mm shaft

Applications

- Model milling Baumann system
- Milled implant models
- DESS Abutment Holder
- 48** NT-Preform® Abutment (nt-trading)
- PreFace® Abutment (Medentika)
- DDSoldiConnect® (Dental Direkt)
- Therapeutic Splints
-
- Milling of Models casts
- Grinding of CAD/CAM blocks
- Implant-supported bridges and bars/ one-piece abutments
- 49** BioHPP elegance prefabs
- Hybrid machining - sintering and remilling
- Manufacture of dental prostheses
- open blank holder (C-Clamp)

Materials

- 50** CORiTEC Materials

Company

- 52** Sales and support partner worldwide
- 53** Location

CORiTEC one

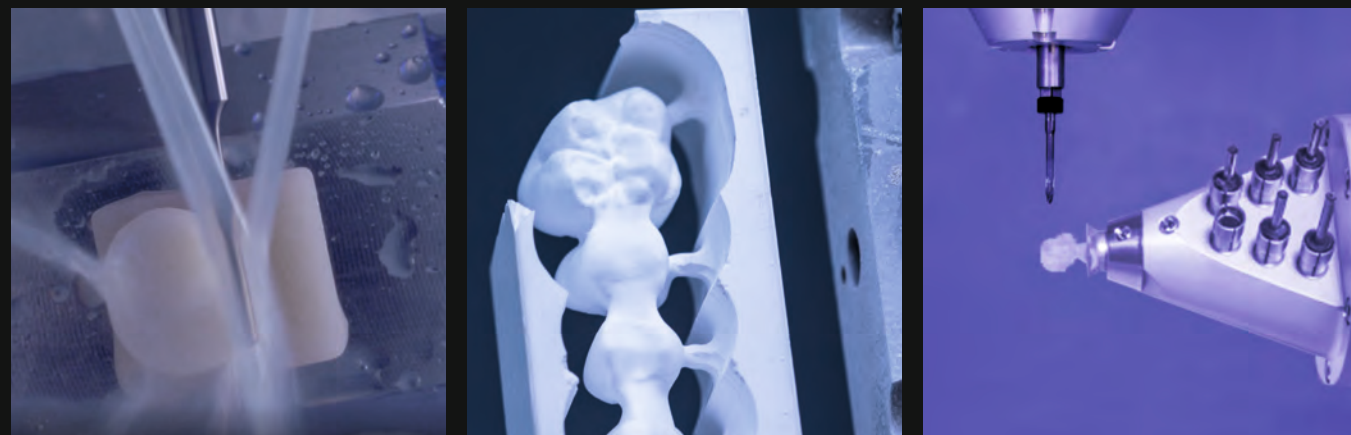
THE INTELLIGENT PRACTICE LAB SOLUTION

The new CORiTEC one[®] machine is a perfect choice for processing all common designed CAD/CAM blocks. With the new extremely stable axis kinematics, the machine is also capable to mill prefabricated abutments.

HIGHLIGHTS

- Novel, closed mono-block cast body for stability and precision
- Autarkic operation without external required compressed air
- Optimized for the integrated CAD/CAM workflow
- Very fast grinding and milling process
- Short payback period
- High precision due to integrated temperature compensation
- Machining of all common material blocks and prefabricated abutments
- Minimal footprint
- No external PC required
- Auto-Calibration*
- Automatic cleaning function*

Further details can be found in our product brochure.



*In preparation



PMMA	WAX	1-fold holder (blocks/premilled abutments)	Crown, Bridge	Inlay, Onlay, Veneer	Hybrid Abutment	Splint
Zr	COMPOSITE		Full Denture	Model	Drilling template	Model casting
PEEK	SINT	1-fold holder (blocks/premilled abutments)	Bridge	Telescopic technology	Abutment	Hybrid machining
Glass ceramics	PreFab Abutments					
CoCr	Ti					

CORiTEC one⁺

THE EXTENDED CHAIRSIDE MILLING SYSTEM

The CORTEC one⁺ is the high-end model in the chairside area. Due to the 5-axis simultaneous technology, the C-Clamp holder and the blank holder can be integrated in addition to the single universal holder. This generates new application possibilities and more flexibility for creating the expected tooth restoration. The compact and stable basic design of the machine enables precise work in block and blank shapes.

HIGHLIGHTS

- Novel, closed mono-block cast body for highest stability and precision
- No external PC required
- Half-open blank holder „C-Clamp“ (optional)
- High precision due to integrated temperature compensation
- Self-sufficient operation without external required compressed air
- Short amortization period
- Minimal footprint
- Auto calibration*
- Automated cleaning function*
- Turn-milling-grinding-processing possible

Further details can be found in our product brochure.



*In preparation



PMMA	WAX	1-fold holder	Standard	Dentures	C-Clamp	Crown, Bridge	Inlay, Onlay, Veneer	Hybrid Abutment	Splint
Zr	COMPOSITE								
PEEK	SINT	Block	Premilled Abutment	Quick clamping system (manual)		Full Denture	Model	Drilling template	Model casting
Glass ceramics	PreFab Abutments								
CoCr**	Ti**					Bridge	Telescopic technology	Abutment	Hybrid machining

**see comparison table

CORiTEC 150i PRO

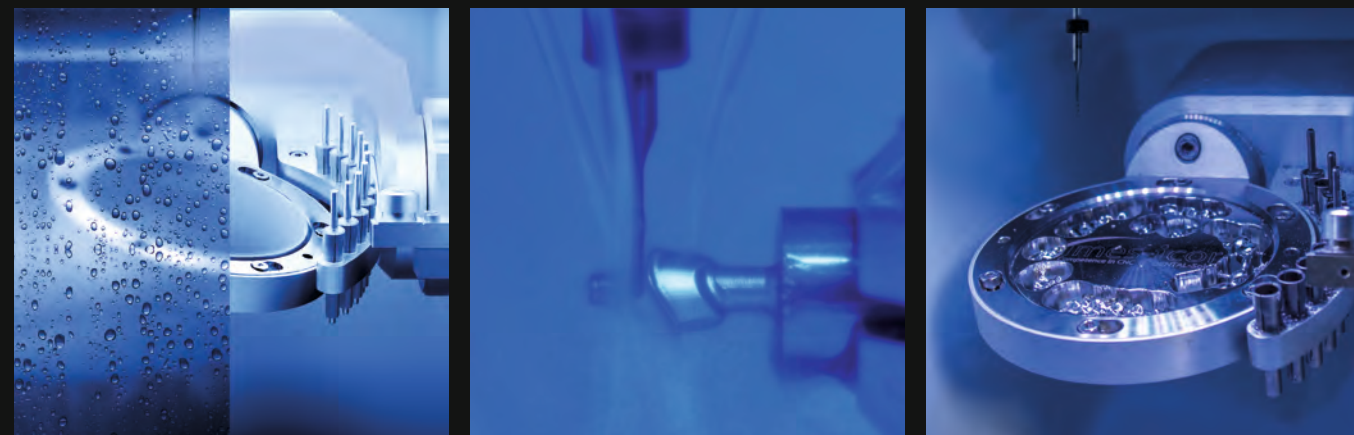
THE FLEXIBLE MILLING SYSTEM IN CONFINED SPACES

The extremely stable design of the mono-block cast body enables precise machining in round and block form. The machine's small dimensions and 5-axis simultaneous technology offer a unique ratio of machine size and functionality. Convince yourself of the performance of the CORiTEC 150i for your laboratory!

HIGHLIGHTS

- Novel, closed mono-block cast body for highest stability and precision
- No external PC required
- Half-open blank holder „C-Clamp“ (optional)
- Ionizer inclusive
- Wet and dry machining possible
- High precision due to integrated temperature compensation
- Minimum external compressed air, only 3 bar required
- Short amortization period
- Minimal footprint
- Auto calibration*
- Automated cleaning function*
- Metal processing**
- Turn-milling-grinding-processing possible

Further details can be found in our product brochure.



*In preparation | **Limited metal processing in preparation



- WET optional
- DRY
- 3 mm 10x
- A/B
- ION optional

PMMA	WAX	1-fold holder	Standard	Dentures	C-Clamp	Crown, Bridge	Inlay, Onlay, Veneer	Hybrid Abutment	Splint
Zr	COMPOSITE								
PEEK	SINT	Block	Premilled Abutment	Quick clamping system (manual)		Full Denture	Model	Drilling template	Model casting
Glass ceramics	PreFab Abutments								
CoCr	Ti					Bridge	Telescopic technology	Abutment	Hybrid machining

CORiTEC 250i/250i dry

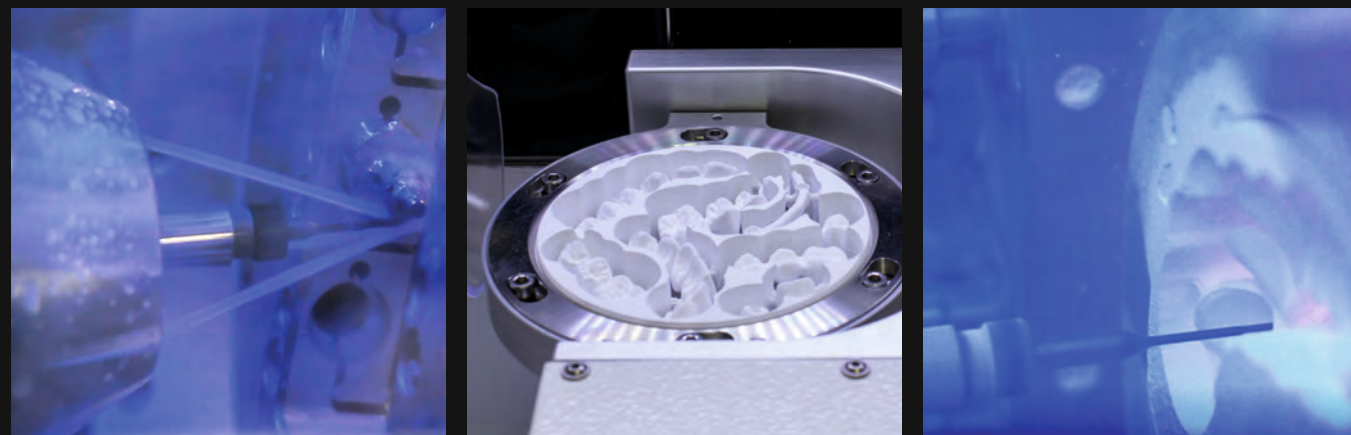
THE PROVEN 5-AXIS SYSTEM

The CORTEC 250i and CORTEC 250i dry machine systems are the most frequently used CAD/CAM systems in the field of zirconium dioxide, PMMA, Wax or glass ceramics. Thanks to the 5-axis simultaneous technology, these machines can also produce complex dental prostheses with diverging stumps and undercuts in the highest quality without reworking.

HIGHLIGHTS

- 5-axis machining systems with up to $\pm 30^\circ$ axis orientation
- Tool runtime control/breakage control
- Integrated cooling circuit for cooling lubricant
- Compressed air and coolant level monitoring
- Metalworking for PreFab Abutments
- 60.000 rpm spindle and double torque
- Machining of zirconium, PMMA, wax, plastics, grindable board materials
- Also available as **DRY** version
- High precision due to integrated temperature compensation

Further details can be found in our product brochure.



- WET optional
- DRY
- 3 mm 12x
- ION

PMMA	WAX	Standard	PreMilled Abutment	Dentures	Crown, Bridge	Inlay, Onlay, Veneer	Hybrid Abutment	Splint
Zr	COMPOSITE							
PEEK	SINT	C-Clamp	Block	Manual clamping system	Full Denture	Model	Drilling template	Model casting
Glass ceramics	PreFab Abutments							
CoCr	Ti				Bridge	Telescopic technology	Abutment	Hybrid machining

CORiTEC 250i Loader PRO

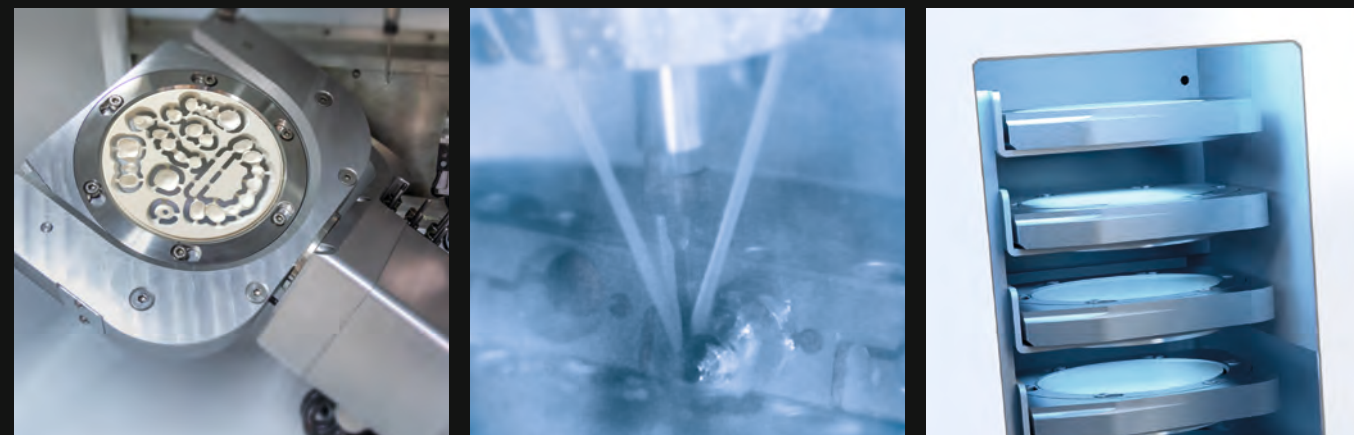
AUTOMATION IN THE SMALLEST SPACE

The compact 5-axis milling machine opens up a completely new machine segment at an attractive price-performance ratio. It offers automation and 5-axis simultaneous machining of circular blanks and blocks in the smallest space and. The milling system is equipped with a fully automatic 16-fold tool magazine with 3 mm milling tools and an integrated touch-screen monitor, which facilitates an intuitive operation in conjunction with the new SmartControl™ software. The fully automatic 7-fold (optional 9-fold) blank changer offers the possibility to process all common materials of the dental industry, an automated production is therefore feasible. The CORiTEC 250i Loader PRO is the perfect solution for technicians who want to create their daily work more independent!

HIGHLIGHTS

- Novel, closed mono-block cast body for stability and precision
- 7-fold blank changer (optional 9-fold)
- 16-fold tool changer
- Blank and tool magazine exchangeable
- Wet and dry machining possible
- Control PC with touchscreen integrated
- 3-fold integrated ionizer
- Processing of prefabricated abutments
- High precision due to integrated temperature compensation
- High-frequency spindle
- Minimal footprint
- Auto calibration
- Automated cleaning function
- Metal processing

Further details can be found in our product brochure.



Optional: 9-fold blank magazine

7-fold blank magazine



- WET
- DRY
- 3mm
16x
- A/B
- 9x
- ION

PMMA	WAX	Standard	PreMilled Abutment	Dentures	Crown, Bridge	Inlay, Onlay, Veneer	Hybrid Abutment	Splint
Zr	COMPOSITE							
PEEK	SINT	C-Clamp	Block	Manual clamping system	Full Denture	Model	Drilling template	Model casting
Glass ceramics	PreFab Abutments							
CoCr	Ti				Bridge	Telescopic technology	Abutment	Hybrid machining



CORiTEC 350i/350i Loader

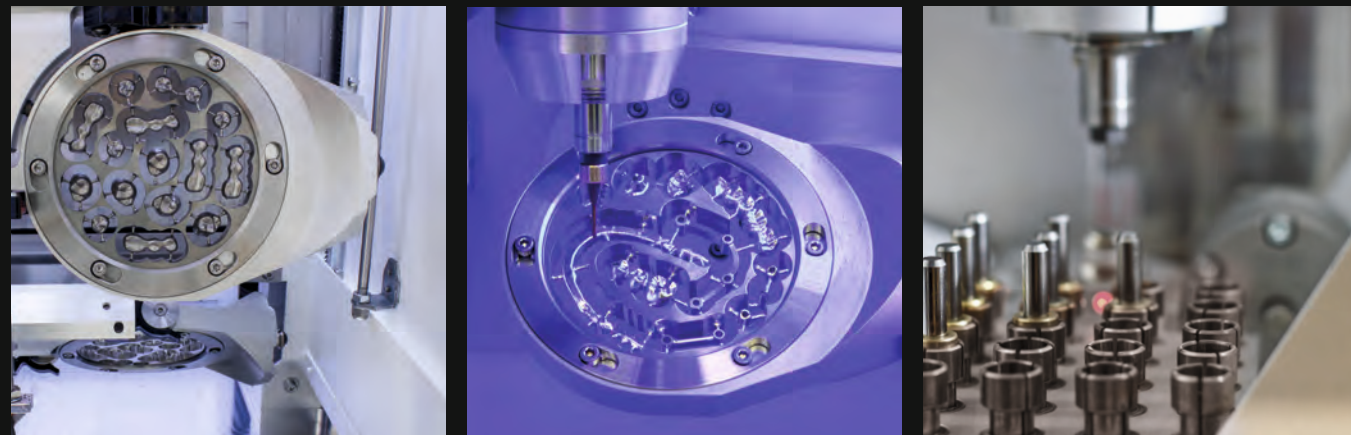
THE AUTOMATED ALL-IN-ONE SOLUTION

The CORTEC 350i is a machine concept that meets all modern requirements for CAD/CAM machining. Thus, processing of all relevant blank materials from cobalt chrome, titanium, zirconia, plastics, block materials and new future materials is largely possible without limitations on a single machine system. The CORTEC 350i Loader is also equipped with a fully automatic blank changer, which enables automated production (for up to 12 blanks).

HIGHLIGHTS

- Base structure made of steel/aluminum
- Integrated wet and dry processing
- Stable 6 mm shank tools
- High precision due to integrated temperature compensation
- Zero-point clamping system for precise repositioning of blanks and adapters (PreFab, C-Clamp, etc.)
- Integrated PC and touch display
- 20-fold tool changer

Further details can be found in our product brochure.



- WET
- DRY
- 6 mm
20x
- 12x
- ION
optional

PMMA	WAX	Standard	PreMilled Abutment	Dentures	Crown, Bridge	Inlay, Onlay Veneer	Hybrid Abutment	Splint
Zr	COMPOSITE							
PEEK	SINT				Full Denture	Model	Drilling template	Model casting
Glass ceramics	PreFab Abutments	C-Clamp	Block	zero-point clamping system				
CoCr	Ti				Bridge	Telescopic technology	Abutment	Hybrid machining

CORiTEC 350i PRO/350i Loader PRO

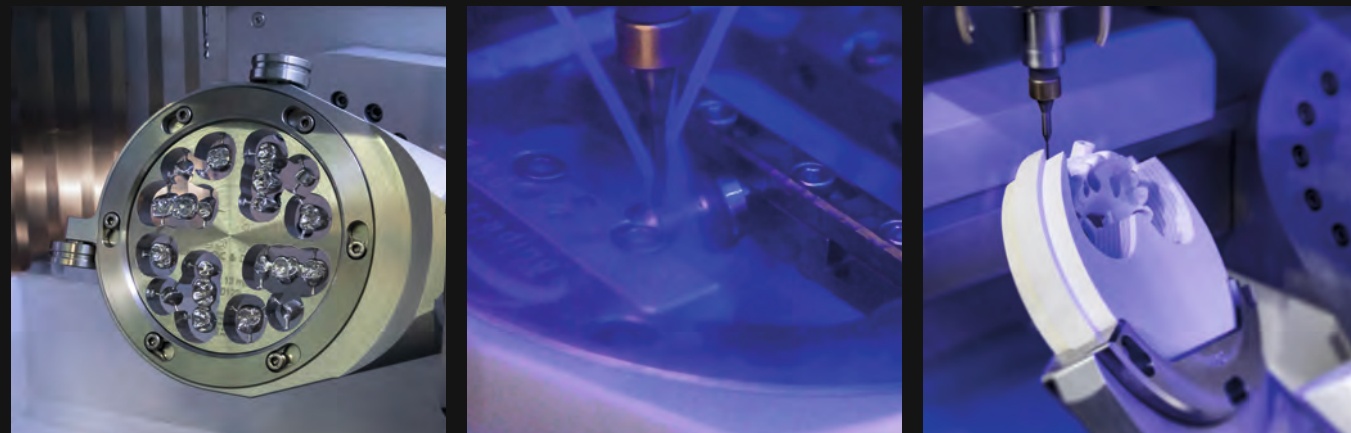
THE PROFESSIONAL SOLUTION FOR HIGHEST DEMANDS

The high-definition dynamic servo motors with absolute measuring systems increase processing speed by up to 20 % while maintaining optimum precision. This makes the CORiTEC 350i PRO suitable for the highest demands of a dental lab or milling center in a very compact design. The CORiTEC 350i Loader PRO is also equipped with a fully automatic blank changer (for up to 12 blanks).

HIGHLIGHTS

- Revolutionary base structure of polymer concrete
- 5-axis, simultaneous machining
- Absolute measuring system in all axes
- New, high-dynamic servo drives for up to 20 % quicker processing
- Integrated PC and touch display
- Zero-point clamping system for precise repositioning of blanks and adapters (PreFab, C-Clamp, etc.)
- High precision due to integrated temperature compensation

Further details can be found in our product brochure.



- WET
- DRY
- 6 mm
20x
- ION
optional

PMMA	WAX	Standard	PreMilled Abutment	Dentures	Crown, Bridge	Inlay, Onlay, Veneer	Hybrid Abutment	Splint
Zr	COMPOSITE							
PEEK	SINT				Full Denture	Model	Drilling template	Model casting
Glass ceramics	PreFab Abutments	C-Clamp	Block	zero-point clamping system				
CoCr	Ti				Bridge	Telescopic technology	Abutment	Hybrid machining

CORITEC 350i PRO⁺/350i Loader PRO⁺

THE PLUS OF PERFORMANCE

As already implemented in the CORITEC 350i PRO, the CORITEC 350i PRO⁺ series was also equipped with high-resolution dynamic servo motors and absolute measuring systems. In order to take full advantage of this advanced technology, it is equipped with a powerful 2.6 kW spindle with 3-fold hybrid ball bearing (water-cooled). The CORITEC 350i Loader PRO⁺ with fully automated blank magazine also enables versatile machining of up to 12 blanks in unmanned operation.

HIGHLIGHTS

- Powerful 2.6 kW spindle with 3-fold hybrid ball bearing (water-cooled)
- Low vibration due to stainless steel holder
- Absolute high-resolution measuring systems in all axes
- Optimized for highest surface quality
- 50 % faster roughing
- Integrated PC and touch display
- Zero-point clamping system for precise repositioning of blanks and adapters (PreFab, C-Clamp, etc.)
- High precision due to integrated temperature compensation

Further details can be found in our product brochure.



- WET
- DRY
- 6 mm
20x
- A/B
- 12x
- ION
optional

PMMA	WAX	Standard	PreMilled Abutment	Dentures	Crown, Bridge	Inlay, Onlay, Veneer	Hybrid Abutment	Splint
Zr	COMPOSITE							
PEEK	SINT				Full Denture	Model	Drilling template	Model casting
Glass ceramics	PreFab Abutments	C-Clamp	Block	zero-point clamping system				
CoCr	Ti				Bridge	Telescopic technology	Abutment	Hybrid machining



CORiTEC 650i/650i Loader

WITH FUTURE-ORIENTED TECHNOLOGY

The systems are equipped with the highest quality industrial milling machine technology such as granite construction, linear drives in the linear axes as well as torque motors in the rotary axes, digital absolute length measuring systems and powerful main spindle. The machine concept captivates above all by its precise, vibration-free and dynamic motion sequences in demanding and complex metalworking. The CORiTEC 650i Loader includes a fully integrated automatic 16-fold blank changer. As a result, the machine system can be operated at full capacity around the clock without supervision, while maintaining high precision.

HIGHLIGHTS

- Solid axle construction made of polished natural granite for 5-axis simultaneous machining in high dynamics for high-precision milling results
- Absolute, high-resolution measuring systems in all axes (0.5 µm)
- High-frequency spindle up to 50.000 rpm and 3.2 kW with HSK 25 tool holder
- High precision due to integrated temperature compensation

Further details can be found in our product brochure.



PMMA	WAX	Standard	PreMilled Abutment	Dentures	Crown, Bridge	Inlay, Onlay, Veneer	Hybrid Abutment	Splint
Zr	COMPOSITE							
PEEK	SINT				Full Denture	Model	Drilling template	Model casting
Glass ceramics	PreFab Abutments	C-Clamp	Block	zero-point clamping system				
CoCr	Ti				Bridge	Telescopic technology	Abutment	Hybrid machining

CORiTEC 350i PRO robot

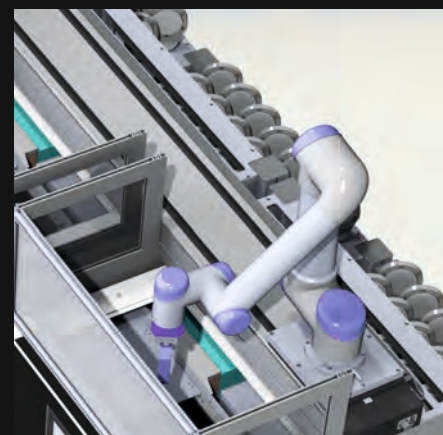
FULLY AUTOMATED IN PERFECTION

The high-end system CORTEC 350i PRO robot for milling centers has been realized on the latest generation of the CORTEC 350i series. All installed components are designed for precision, longevity and the latest technological standards. Thanks to the robot, the production system enables independent milling and equipping with up to 84 dental blanks of various types. It is also possible to realize individual series production or production of different subsections. Thus, materials milling, grinding, polishing or laser can be processed. The system is individually adapted to customer requirements and tailored to your needs together with you.

HIGHLIGHTS

- Fully automatic production line for all materials relevant to dentistry
- Robotic handling of machine loading and unloading
- Fully automated 24 hour production is possible
- Up to 84 dental blanks in the integrated material storage
- Laser processing optionally possible
- High precision due to integrated temperature compensation

Further details can be found in our product brochure.



- WET
- DRY
- 6 mm
80x
- A/B
- 84x
- ION
optional

PMMA	WAX	Standard	PreMilled Abutment	Dentures	Crown, Bridge	Inlay, Onlay, Veneer	Hybrid Abutment	Splint
Zr	COMPOSITE							
PEEK	SINT				Full Denture	Model	Drilling template	Model casting
Glass ceramics	PreFab Abutments	C-Clamp	Block	zero-point clamping system				
CoCr	Ti				Bridge	Telescopic technology	Abutment	Hybrid machining

CORiTEC SmartControl™

SMART CONTROL OF MACHINE SOFTWARE

SmartControl™ – one touch ahead!

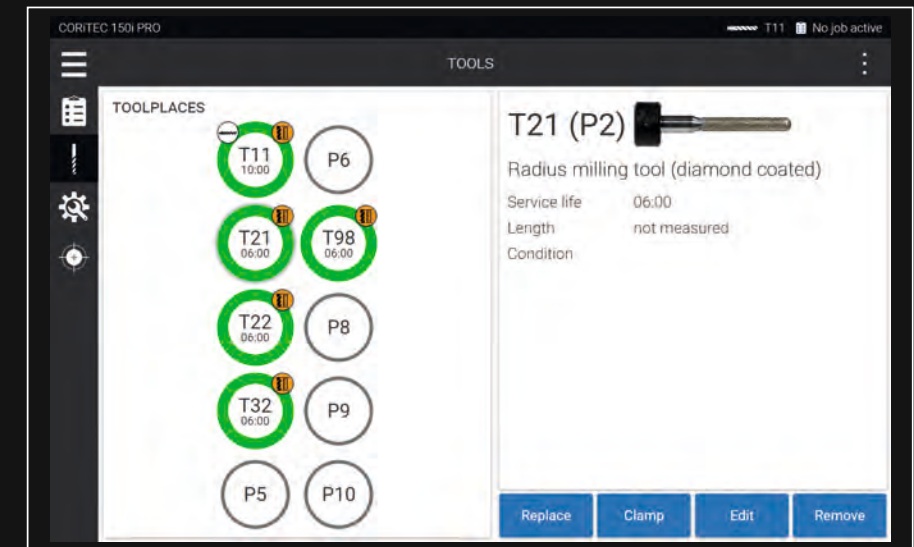
The newly developed control software „SmartControl™“ enables absolutely intuitive operation of our milling machines. From selecting the job to milling or querying the machine status; the self-explanatory and optimized handling makes it possible to start operating the machine in the shortest possible time. Starting a milling process requires only two clicks – benefit from the smart time savings for your workflow!

FEATURES

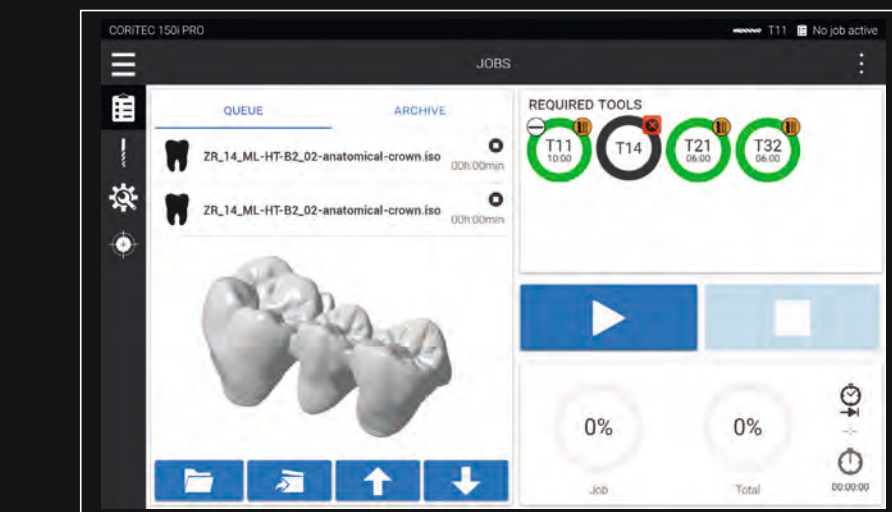
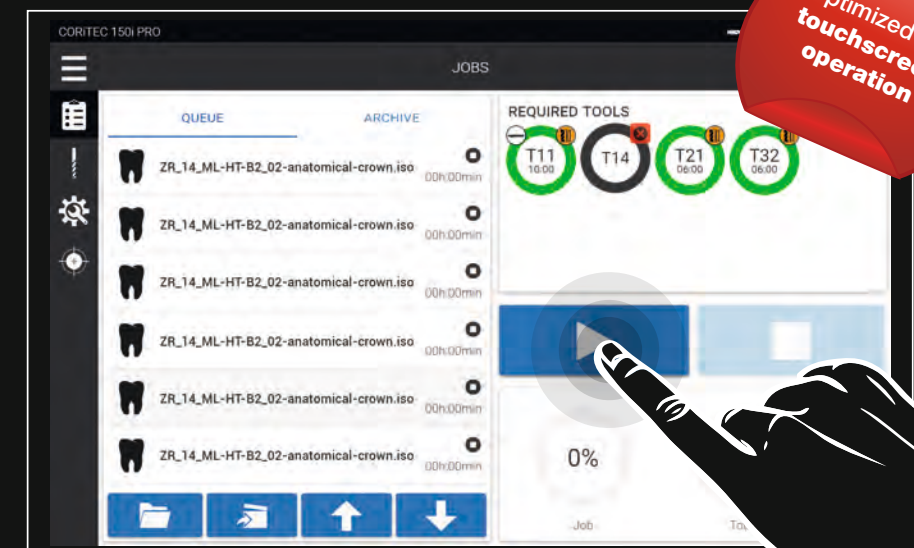
- Modern touch control design
- Easiest operation through intuitive graphical user interface
- High end performance for imes-icore® machines
- Remote monitoring
- Job management with 3D preview
- Multi-language support*

Available for: one/one* 150i series 250i Loader PRO

simple and clear tool selection

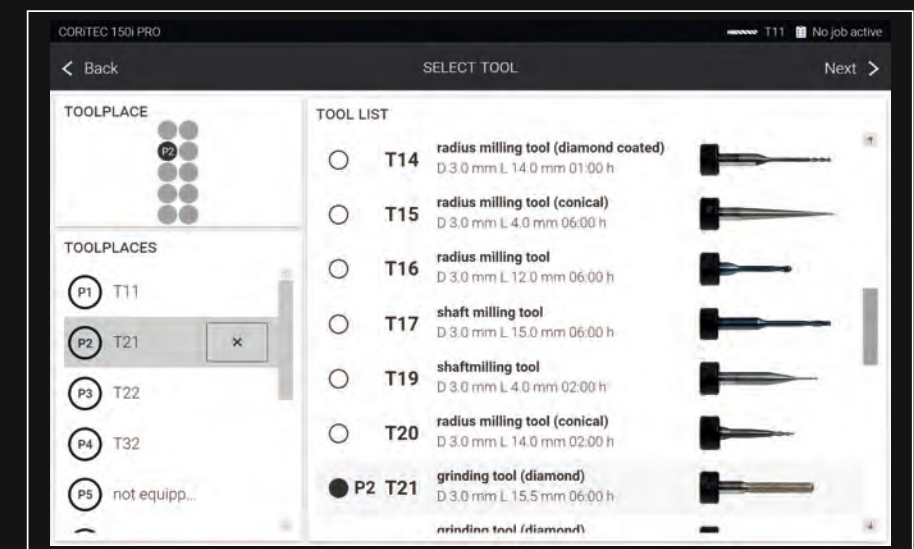


Overview Milling file selection with all necessary functions



Real-time preview of the milling data

Ideal tool management



*In preparation



CORiTEC iCAM V5 smart

SMART HIGH END SOLUTION WITH PERFECT FLEXIBILITY

iCAM V5 smart is the high-end CAM solution from imes-icore®. The software enables high-precision milling data calculation in simultaneous 5-axis machining for best surface quality and fitting accuracy. Especially with hard materials such as glass ceramics, cobalt chrome or titanium, high-resolution milling data are decisive for best fitting accuracy. In addition, the tool life is increased by smooth running of the machine during machining. Thanks to predefined milling strategies developed by imes-icore® for all materials and applications, the iCAM V5 smart provides you with a valuable CAM solution that increases the productivity of the CAD/CAM system.

HIGHLIGHTS

- 5-axis simultaneous machining and/or 3 + 2 machining to reach undercuts
- no annual license fees
- unlimited term
- fully automatic and easy operations with "Wizard Workflow"
- „ReFit“- Abutment exchange geometries
- placing retaining bridges across jobs

ReFit

Highly accurate abutment replacement geometries take the place of STL connection geometries. Optimized milling strategies for:

- High End fits
- Directly screwed abutments
- Directly screw-retained implant bridges/bars

Nesting

- Auto Nesting
- Manual positioning
- Job-to-Job retaining bridge

Postprocessors:

- Control of all CORiTEC machines

Premilled abutment systems:

- Continuous expansion of the libraries:

Geometry detection

Automatic STL data analysis to detect:

- Abutment geometries
- Boreholes
- Marginal contours

Design

- Modern and clear design
- Optimized multi-layer display
- Simulation with collision control and residual material display

Program version

- Future-proof and updateable for expansion levels

Workflow

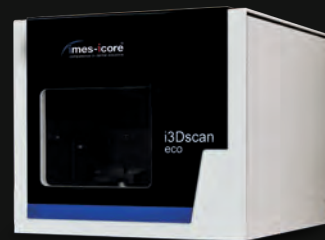
- Minimal familiarization time
- Error prevention through simple intuitive workflow

CORiTEC SCANNER

COMPATIBLE WITH EXOCAD

CORiTEC i3Dscan eco

Camera resolution	1.3 MP
Measurement accuracy (acc to ISO 12836)	6 µm
Measuring field (X x Y x Z) mm	80 x 60 x 85
articulator scan	-
Scan time complete pine	19 sec.
Scan time single stump	32 sec.
Scan time 3-unit bridge	48 sec.
Texture	Monochrome texture scan



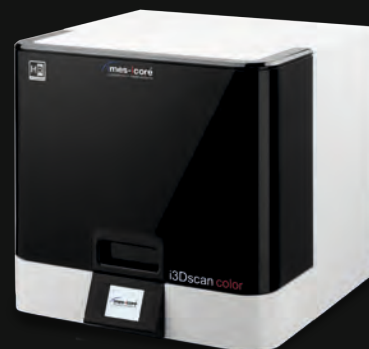
CORiTEC i3Dscan color

Camera resolution	1.3 MP
Measurement accuracy (acc to ISO 12836)	6 µm
Measuring field (X x Y x Z) mm	80 x 60 x 85
articulator scan	✓
Scan time complete pine	16 Sek.
Scan time single stump	33 Sek.
Scan time 3-unit bridge	45 Sek.
Texture	Color texture scan



CORiTEC i3Dscan color HR

camera resolution	2.8 (1.4) MP
Measurement accuracy (acc to ISO 12836)	6 µm
Measuring field (X x Y x Z) mm	80 x 60 x 85
articulator scan	✓
Scan time complete pine	18 Sek.
Scan time single stump	35 Sek.
Scan time 3-unit bridge	50 Sek.
Texture	Color texture scan



3shape DENTAL-SCANNER

3shape E1 / E2 / E3

Camera resolution	2 x 5 MP cameras, Blue LED Multiline
Measurement accuracy (acc to ISO 12836)	10 µm / 10 µm / 7 µm
Scan time complete pine	40 / 30 / 24 sec.
Scan time single stump	25 / 80 / 18 sec.
Scan time 3-unit bridge	130 / 90 / 80 sec.
Texture	n/a / B&W / Color



3shape D1000

camera resolution	4 x 5 MP cameras, Blue LED Multiline
Measurement accuracy (acc to ISO 12836)	5 µm / 8 µm
Scan time dental arch	16 sec.
Scan time stump	15 sec.
Scandauer fuller dental arch	65 sec.
Texture	Color



3shape D2000

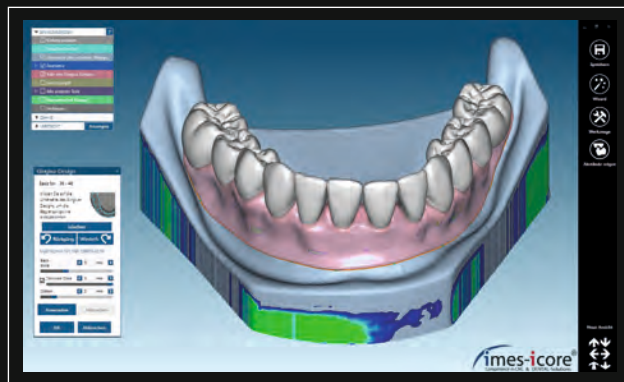
camera resolution	4 x 5 MP cameras, Blue LED Multiline
Measurement accuracy (acc to ISO 12836)	5 µm / 8 µm
Scan time dental arch	16 sec.
Scan time stump	15 sec.
Scan time fuller dental arch	65 sec.
Texture	Color



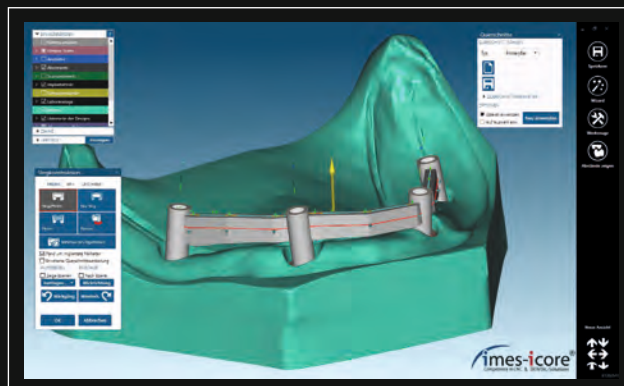
exocad

HIGHLIGHTS

- All common indications and functions
- Photorealistic 3D rendering and high-quality color texturing
- PartialCAD for the design of model casting prostheses
- Extensive free implant system library (also for prefabricated abutments)
- Sending 3D previews via dentalshare webview
- Simulation of jaw movement and determination of dynamic occlusion using a virtual articulator
- Large selection of attachment shapes, for attachment to the construction or for subtraction from the construction
- One-piece individual abutments, directly screw-retained implant bridges and implant bars
- Extensive library of beautiful natural teeth
- Reliable updates and high stability
- No licence fees; therefore no running costs

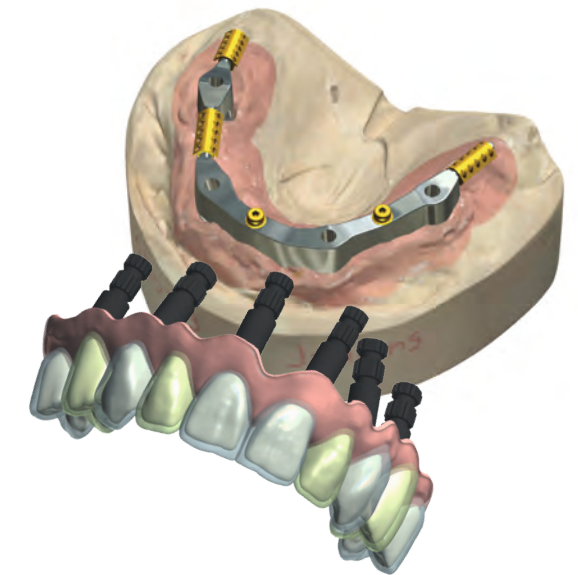


exocad is a dental CAD software proven a thousand times over: Ideal for beginners, powerful in expert hands. The dental CAD software convinces by speed and intuitive operation. In combination with our i3Dscan series, the user is offered an ideal CAD solution without restrictions. The CAD workflow is exactly oriented to the dental technical workflow for the construction of dental restorations. This means that even inexperienced users can easily access digital dental technology. exocad was developed in close cooperation with experienced dental technicians and software specialists. The ergonomic and wizard-guided user interface can be easily adapted to the user's skills and is therefore highly accepted by beginners as well as by experts.



With exocad DentalCAD you can rely on a reliable and stable software with which you can easily handle complex cases in addition to the standard indications such as crowns, bridges, inlays/onlays/veneer and telescopes. Simply expand your exocad DentalCAD standard version according to your needs and choose from many add-on modules such as splint, implant, bar, virtual articulator, ModelCreator or PartialCAD for even more comprehensive indications. As an exocad user, you are at the cutting edge of technology.

3shape CAD-SOFTWARE

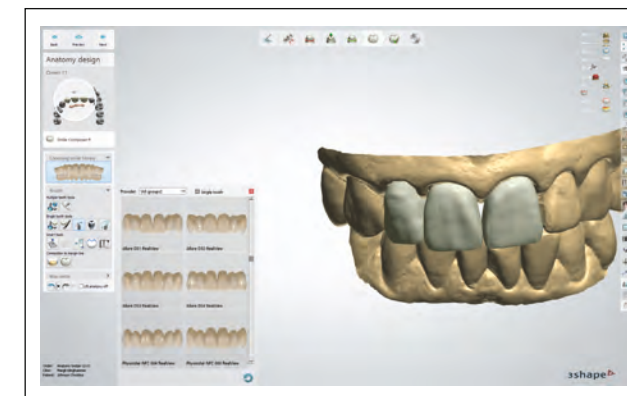


HIGHLIGHTS

- All common indications and functions
- Photorealistic representation of the construction in real time
- High flexibility through the use of add-on modules via CAD points
- Mirroring of existing teeth into the running construction
- 3shape articulator holder for scanning with articulator (E-Series)
- Extensive free implant system library (also for prefabricated abutments)
- Simulation of jaw movement using a virtual articulator
- Construction of Bite splints using the free „3shape Splint Designer“ module
- One-piece individual abutments, directly screw-retained implant bridges and implant bars
- Maximum possibilities due to server-client installations and two-user license options
- Unlimited software updates to stay on the cutting edge of technology



Thanks to many years of experience in the field of dental scanners and CAD, 3shape Dental System offers one of the most powerful CAD design systems in the world. In a mature and intuitive workflow, 3shape combines an efficient workflow from 3D scanning and CAD design to structured order management and helpful communication tools. In addition to standard applications such as crown/bridge design, telescopic crowns and inlay/onlay/veneer, the user is provided with a range of additional modules such as Abutment Designer, Removable Partial Design, Implant bridges and bars, Model Builder, Implant Bridge and Implant Bridge Design module, rail module etc..

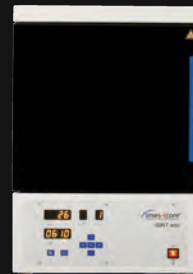


A custom-made material configuration of integrated CORiTEC materials as well as an open STL interface guarantee optimal and precisely results for all imes-icore® machine types. 3shape also offers an extensive portfolio of desktop and intraoral scanners, from which the user can choose the one that best suits his needs and application areas. Thanks to unlimited software upgrades, the user always has access to the latest technologies and functionalities.

CORiTEC Sintering Furnaces

iSINT eco

The iSINT eco stands for economy and offers high-quality technology, matching accessories for high standards at a fair price. Compact and with a small footprint, the iSINT eco sintering oven still has sufficient capacity for a sintering bowl Ø 100 mm for approx. 25 units. The door stop can be mounted right and left.



iSINT PRO

A larger sintering capacity of up to 80 single crowns is offered by the new iSINT PRO. With a heating system with four high-quality molybdenum disilicide (MoSi₂) heating elements, you can choose between conventional long-term sintering or SPEED sintering at a rate of up to 99°C/minute. The iSINT PRO is controlled by a simple and convenient program control. The programs are displayed on a 4-line LCD display. A timer function for overnight sintering or the use of pre-drying programs for shaded zirconium restorations offer further options. In addition, three service programs are available for easy maintenance of the sinter furnace.



SINTEROFS IN COMPARISON

	iSINT eco	iSINT PRO
Number of heating elements	4	4
Display	7-Segment	4-line LCD
Number of program memories	9	30
Combustion chamber capacity	1 x 100	2 x 120
max. heating rate in °C/min	30	99
Power in W	1300	3200
Lift function	No	Yes
Speedsintering	No	Yes

CORiDRY

The CORiDRY pre-drying device ensures rapid and uniform drying of the colored zirconium dioxide frameworks through air circulation. The device is CE-certified and easy to use. No staining thanks to even drying; Pre-drying in the sintering furnace is not necessary; this reduces the wear of heating elements in the sintering furnace. Two heating levels up to a maximum of 70°C.



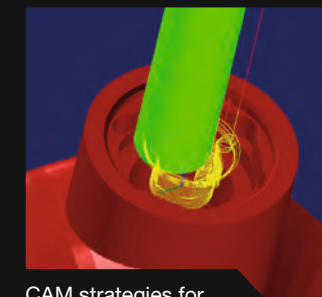
Special solutions with technology partners

CORTEC 650i FOR HYBRID PROCESSING

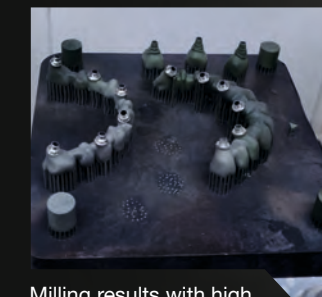
With the high-precision CORTEC 650i machine, technology partners have developed a special process to re-mill work that was previously produced in the SLM process with high precision. This allows e.g. build highly complex web constructions made of various materials such as titanium or CoCr in advance in the SLM process, and subsequently rework interfaces with the CORTEC 650i for the perfect fit and surface finish. This procedure is implemented in a special WorkFlow, in which a 3D probe is integrated in the CORTEC 650i. The touch probe determines the exact position and position of the SLM building board. Using 3D measurement functions of the CAM software, the fit and interface areas of the restorations on the SLM plate can then be precisely milled with the CORTEC 650i. This method can be used in principle with any SLM systems and with different CAM systems in combination with the CORTEC 650i.



Precise 3D measurement in the CORTEC 650i



CAM strategies for precision areas



Milling results with high surface quality



With the 3D probe, a controlled measurement is made via reference points in order to determine deviations, displacements and rotations. In the background, the imes-icore® 3D measurement software calculates the values and writes them back to the CAM software to implement the corrections.



1 Compatible with among others the following SLM installations:

2 Compatible with among others the following CAM systems:

CORiTEC suction systems

iVAC silent



Volume: 8 liters (dust drawer)
Volume flow: 160 m³/hr
Special features: suitable for machine tables T0, T1 and T2; quiet running; very compact; Self-cleaning by vibration



iVAC silent PRO

Volume: 8 liters (dust drawer)
Volume flow: 240 m³/hr
Special features: suitable for machine tables T1 and T2; quiet running; very compact; Self-cleaning by vibration

iVAC eco+



Volume: 25 liters (filter bag)
Volume flow: 260 m³/hr
Special features: suitable for all machine tables T1 and T2; quiet running



iVAC PRO+

Volume: 15 litres (dust drawer)
Volume flow: 280 m³/hr
Special features: High-performance industrial standard; compressed air self-cleaning system

	iVAC silent	iVAC silent PRO	iVAC eco+	iVAC PRO+
Volume flow	160 m ³ /hr	240 m ³ /hr	260m ³ /hr	280m ³ /hr
Output	480 W	1610 W	1200 W	1200 W
Filter system	Teflon filter cartridge, automatic cleaning feature	Teflon filter cartridge, automatic cleaning feature	dust drawer, HEPA filter	Teflon filter cartridge, automatic cleaning feature
Filter volume	8 liters	8 liters	25 liters	15 liters
W x D x H (mm/inch)	245 x 500 x 440/ 9.7 x 19.7 x 17.3	270 x 540 x 535/ 10.6 x 21.2 x 21.1	440 x 460 x 750/ 17.3 x 18.1 x 29.5	350 x 350 x 1000/ 13.8 x 13.8 x 39.4
Supply voltage	230 V	115 V/230 V	115 V/230 V	115 V/230 V
Suitable for	CORiTEC one/one+ CORiTEC 150i* CORiTEC 250i**	CORiTEC one/one+ CORiTEC 150i* CORiTEC 250i** CORiTEC 350i***	CORiTEC one/one+ CORiTEC 150i* CORiTEC 250i** CORiTEC 350i***	CORiTEC 150i* CORiTEC 250i** CORiTEC 350i*** CORiTEC 650i****

CORiTEC machine tables

The undercounters, specially developed for the needs of the various machine types, impress with their sturdy design as well as their attractive appearance. The machine tables have sufficient floor space. Stable rollers ensure optimum stability and easy movement of the devices. Drawers, cable ducts and a cabinet for the integration of appropriate extraction systems are already provided.

Machine Table T0	Machine Table T1	Machine Table T2
W x H x D 422 x 900 x 540 mm 16.6 x 35.4 x 21.3 inch	W x H x D 770 x 930 x 790 mm 30.3 x 36.6 x 31.1 inch	W x H x D 1060 x 930 x 790 mm 41.7 x 36.6 x 31.1 inch
CORiTEC one series CORiTEC 150i series	CORiTEC 250i/250i dry CORiTEC 350i CORiTEC 350i PRO	CORiTEC 250i Loader PRO CORiTEC 350i Serie

MACHINE TABLE T0



MACHINE TABLE T1



MACHINE TABLE T2



* for all machines of the 150i series ** for all machines of the 250i series *** for all machines of the 350i series **** for all machines of the 650i series


FOR ADDITIONAL ACCESSORIES SEE WWW.IMES-ICORE.DE

Cutters & grinders | 3 mm shaft

Customized solutions optimized for the particular materials and equipment

For models: one/one+ 150i 250i 250i Loader PRO


T1/T6 - 3.0 | 3.0 mm
radius milling tool (l = 15 mm)

T1	Ti		up to 15 mm
T6	CoCr		

3,0 mm Ø 3 mm Blades

Art.-No. 526029 3003

T12 - 1.0 | 3.0 mm
radius milling tool (single blade, slide coated)

T12	PMMA		up to 25 mm
	WAX		
	PEEK		

1,0 mm Ø 3 mm Blades

Art.-No. 526004 1003c


T20 - 0.6 | 3.0 mm
radius milling tool (conical)

T20	Ti		up to 15 mm
	CoCr		

0,6 mm Ø 3 mm Blades

Art.-No. 526003 0603


T31 - 3.0 | 3.0 mm
shaft milling tool (single blade, slide coated)

T31	PMMA		up to 30 mm
	WAX		
	Zr		

3,0 mm Ø 3 mm Blade

Art.-No. 526012 3003

T2/T7 - 2.0 | 3.0 mm
radius milling tool (l = 12 mm)

T2	Ti		up to 15 mm
T7	CoCr		

2,0 mm Ø 3 mm Blades

Art.-No. 526029 2003


T12/T14 - 1.0 | 3.0 mm
radius milling tool

T12	PMMA		up to 25 mm
	WAX		
T14	Zr		

1,0 mm Ø 3 mm Blades

Art.-No. 526016 1003

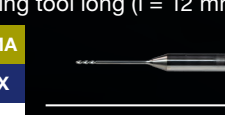
T21 - 2.5 | 3.0 mm
radius grinding tool (diamond)

T21	glass ceramics		up to 25 mm

2,5 mm Ø 3 mm Blades

Art.-No. 526005 2503


T32 - 0.6 | 3.0 mm
radius milling tool long (l = 12 mm)

T32	PMMA		up to 25 mm
	WAX		
	Zr		

0,6 mm Ø 3 mm Blades

Art.-No. 526012 0603

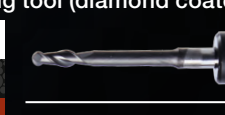
T3/T8 - 1.5 | 3.0 mm
radius milling tool (l = 12 mm)

T3	Ti		up to 15 mm
T8	CoCr		

1,5 mm Ø 3 mm Blades

Art.-No. 526029 1503

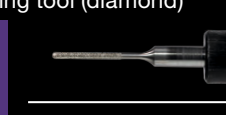
T13/T40/T50 - 2.5 | 3.0 mm
radius milling tool (diamond coated)

T13	Zr		up to 25 mm
T40	SINT		
T50	COMP		

2,5 mm Ø 3 mm Blades

Art.-No. 526013 2503

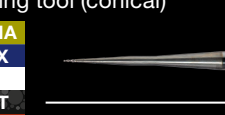
T22 - 1.0 | 3.0 mm
radius grinding tool (diamond)

T22	glass ceramics		up to 25 mm

1,0 mm Ø 3 mm Blades

Art.-No. 526005 1003


T33/T43/T53 - 0.3 | 3.0 mm
radius milling tool (conical)

T33	PMMA		up to 25 mm
	WAX		
T43	SINT		
T53	COMP		

0,3 mm Ø 3 mm Blades

Art.-No. 526016 0303

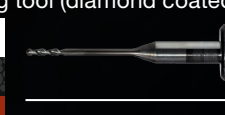
T4/T9 - 1.0 | 3.0 mm
radius milling tool (l = 9 mm)

T4	Ti		up to 15 mm
T9	CoCr		

1,0 mm Ø 3 mm Blades

Art.-No. 526029 1003

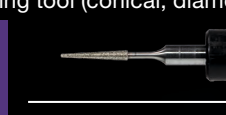
T14/T41/T51 - 1.0 | 3.0 mm
radius milling tool (diamond coated)

T14	Zr		up to 25 mm
T41	SINT		
T51	COMP		

1,0 mm Ø 3 mm Blades

Art.-No. 526013 1003

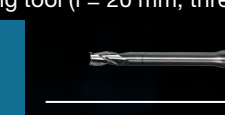
T23 - 0.6 | 3.0 mm
radius grinding tool (conical, diamond)

T23	glass ceramics		up to 25 mm

0,6 mm Ø 3 mm Blades

Art.-No. 526005 0603

T98 - 2.5 | 3.0 mm
shaft milling tool (l = 20 mm, three blades)

T98	CALIBR.		up to 25 mm

2,5 mm Ø 3 mm Blades

Art.-No. 526024 2503

T5/T10/T17 - 1.5 | 3.0 mm
shaft milling tool (l = 15 mm), universal

T5	Ti		up to 25 mm
T10	CoCr		
	PMMA		
T17	WAX		

1,5 mm Ø 3 mm Blades

Art.-No. 526001 1503

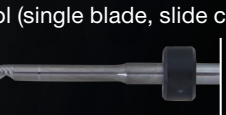
T15/T42/T52 - 0.6 | 3.0 mm
radius milling tool (conical)

T15	PMMA		up to 25 mm
	WAX		
	Zr		
T42	SINT		

0,6 mm Ø 3 mm Blades

Art.-No. 526016 0603

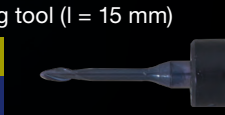
T11 - 2.5 | 3.0 mm
radius milling tool (single blade, slide coated)

T11	PMMA		up to 25 mm
	WAX		
	PEEK		

2,5 mm Ø 3 mm Blade

Art.-No. 526004 2503c

T16 - 1.5 | 3.0 mm
radius milling tool (l = 15 mm)

T16	PMMA		up to 15 mm
	WAX		
	Zr		

1,5 mm Ø 3 mm Blades

Art.-No. 526016 1503

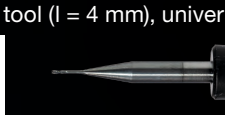
T11/T13 - 2.5 | 3.0 mm
radius milling tool

T11	PMMA		up to 25 mm
	WAX		
T13	Zr		

2,5 mm Ø 3 mm Blades

Art.-No. 526016 2503

T19 - 0.5 | 3.0 mm
shaft milling tool (l = 4 mm), universal

T19	UNIVERSAL		up to 15 mm

0,5 mm Ø 3 mm Blades

Art.-No. 526001 0503



Cutters & grinders | 6 mm shaft

Customized solutions optimized for the particular materials and equipment

For models: 350i 350i PRO 350i PRO+ 650i

<p>T1/T6 - 3.0 6.0 mm radius milling tool short (l = 15 mm)</p> <p>T1 Ti T6 CoCr</p> <p>3,0 mm Ø 6 mm</p> <p>up to 15 mm Blades</p> <p>Art.-No. 526029 3006</p>	<p>T13/T40/T50 - 2.5 6.0 mm radius milling tool (diamond coated)</p> <p>T13 Zr T40 SINT T50 COMP</p> <p>2,5 mm Ø 6 mm</p> <p>up to 25 mm Blades</p> <p>Art.-No. 526013 2506</p>	<p>T22 - 1.0 6.0 mm radius milling tool (diamond)</p> <p>T22 glass ceramics</p> <p>1,0 mm Ø 6 mm</p> <p>Art.-No. 526005 1006</p>	<p>T35 - 2.0 6.0 mm radius milling tool long (l = 20 mm)</p> <p>T35 PMMA WAX</p> <p>2,0 mm Ø 6 mm</p> <p>up to 30 mm Blades</p> <p>Art.-No. 526012 2006</p>
<p>T2/T7 - 2.0 6.0 mm radius milling tool short (l = 12 mm)</p> <p>T2 Ti T7 CoCr</p> <p>2,0 mm Ø 6 mm</p> <p>up to 15 mm Blades</p> <p>Art.-No. 526029 2006</p>	<p>T14/T41/T51 - 1.0 6.0 mm radius milling tool (diamond coated)</p> <p>T14 Zr T41 SINT T51 COMP</p> <p>1,0 mm Ø 6 mm</p> <p>up to 25 mm Blades</p> <p>Art.-No. 526013 1006</p>	<p>T23 - 0.6 6.0 mm radius milling tool (conical, diamond)</p> <p>T23 glass ceramics</p> <p>0,6 mm Ø 6 mm</p> <p>Art.-No. 526005 0606</p>	<p>T61 - 3.0 6.0 mm Quattro speed milling tool (l = 15 mm)</p> <p>T61 CoCr</p> <p>3,0 mm Ø 6 mm</p> <p>up to 15 mm Blades</p> <p>Art.-No. 526025 3006</p>
<p>T3/T8 - 1.5 6.0 mm radius milling tool short (l = 12 mm)</p> <p>T3 Ti T8 CoCr</p> <p>1,5 mm Ø 6 mm</p> <p>up to 15 mm Blades</p> <p>Art.-No. 526029 1506</p>	<p>T15/T42/T52 - 0.6 6.0 mm radius milling tool (conical)</p> <p>T15 PMMA WAX Zr T42 SINT T52 COMP</p> <p>0,6 mm Ø 6 mm</p> <p>up to 25 mm Blades</p> <p>Art.-No. 526019 0606</p>	<p>T26 - 3.0 6.0 mm radius milling tool long (l = 20 mm)</p> <p>T26 Ti CoCr</p> <p>3,0 mm Ø 6 mm</p> <p>16 - 20 mm Blades</p> <p>Art.-No. 526030 3006</p>	<p>T62 - 2.0 6.0 mm torus milling tool (r = 0.2 mm, l = 16 mm, four blades)</p> <p>T62 Ti CoCr</p> <p>2,0 mm Ø 6 mm</p> <p>up to 15 mm Blades</p> <p>Art.-No. 526025 2006</p>
<p>T4/T9 - 1.0 6.0 mm radius milling tool short (l = 9 mm)</p> <p>T4 Ti T9 CoCr</p> <p>1,0 mm Ø 6 mm</p> <p>up to 15 mm Blades</p> <p>Art.-No. 526029 1006</p>	<p>T16 - 1.5 6.0 mm radius milling tool long (l = 15 mm)</p> <p>T16 PMMA WAX Zr</p> <p>1,5 mm Ø 6 mm</p> <p>up to 25 mm Blades</p> <p>Art.-No. 526019 1506</p>	<p>T27 - 2.0 6.0 mm radius milling tool long (l = 16 mm)</p> <p>T27 Ti CoCr</p> <p>2,0 mm Ø 6 mm</p> <p>16 - 20 mm Blades</p> <p>Art.-No. 526030 2006</p>	<p>T63 - 1.5 6.0 mm torus milling tool (r = 0.08 mm, l = 7 mm, two blades)</p> <p>T63 Ti CoCr</p> <p>1,5 mm Ø 6 mm</p> <p>up to 15 mm Blades</p> <p>Art.-No. 526025 1506</p>
<p>T5/T10 - 1.5 6.0 mm shaft milling tool short (l = 12 mm, four blades)</p> <p>T5 Ti T10 CoCr</p> <p>1,5 mm Ø 6 mm</p> <p>up to 15 mm Blades</p> <p>Art.-No. 526002 1506</p>	<p>T17 - 1.5 6.0 mm shaft milling tool (l = 15 mm)</p> <p>T17 PMMA WAX Zr</p> <p>1,5 mm Ø 6 mm</p> <p>up to 25 mm Blades</p> <p>Art.-No. 526001 1506</p>	<p>T28 - 1.5 6.0 mm radius milling tool long (l = 15 mm)</p> <p>T28 Ti CoCr</p> <p>1,5 mm Ø 6 mm</p> <p>up to 25 mm Blades</p> <p>Art.-No. 526030 1506</p>	<p>T64 - 1.5 6.0 mm torus milling tool (r = 0.08 mm, l = 15 mm, two blades)</p> <p>T64 Ti CoCr</p> <p>1,5 mm Ø 6 mm</p> <p>up to 15 mm Blades</p> <p>Art.-No. 526025 1506</p>
<p>T11 - 2.5 6.0 mm radius milling tool (single blade, slide coated)</p> <p>T11 PMMA WAX PEEK</p> <p>2,5 mm Ø 6 mm</p> <p>up to 25 mm Blade</p> <p>Art.-No. 526004 2506</p>	<p>T18 - 0.5 6.0 mm radius milling tool (l = 4 mm)</p> <p>T18 UNIVERSAL</p> <p>0,5 mm Ø 6 mm</p> <p>up to 15 mm Blades</p> <p>Art.-No. 526026 0506</p>	<p>T29 - 1.0 6.0 mm radius milling tool long (l = 11 mm)</p> <p>T29 Ti CoCr</p> <p>1,0 mm Ø 6 mm</p> <p>16 - 20 mm Blades</p> <p>Art.-No. 526030 1006</p>	<p>T67 - 2.0 6.0 mm shaft milling tool short (l = 7 mm, four blades)</p> <p>T67 Ti CoCr</p> <p>2,0 mm Ø 6 mm</p> <p>up to 15 mm Blades</p> <p>Art.-No. 526002 2006</p>
<p>T11/T13 - 2.5 6.0 mm radius milling tool</p> <p>T11 PMMA WAX T13 Zr</p> <p>2,5 mm Ø 6 mm</p> <p>up to 25 mm Blades</p> <p>Art.-No. 526019 2506</p>	<p>T19 - 0.5 6.0 mm shaft milling tool (l = 4 mm)</p> <p>T19 UNIVERSAL</p> <p>0,5 mm Ø 6 mm</p> <p>up to 15 mm Blades</p> <p>Art.-No. 526001 0506</p>	<p>T30 - 4.0 6.0 mm shaft milling tool long (l = 32 mm, single blade, slide coated)</p> <p>T30 PMMA WAX PEEK</p> <p>4,0 mm Ø 6 mm</p> <p>up to 30 mm Blade</p> <p>Art.-No. 526012 4006</p>	<p>T68 - 1.5 6.0 mm shaft milling tool long (l = 15 mm, four blades)</p> <p>T68 UNIVERSAL</p> <p>1,5 mm Ø 6 mm</p> <p>16 - 20 mm Blades</p> <p>Art.-No. 526021 1506</p>
<p>T12 - 1.0 6.0 mm radius milling tool (single blade, slide coated)</p> <p>T12 PMMA WAX PEEK</p> <p>1,0 mm Ø 6 mm</p> <p>up to 25 mm Blade</p> <p>Art.-No. 526004 1006</p>	<p>T20 - 0.6 6.0 mm radius milling tool (conical)</p> <p>T20 Ti CoCr</p> <p>0,6 mm Ø 6 mm</p> <p>up to 15 mm Blades</p> <p>Art.-No. 526003 0606</p>	<p>T32 - 0.6 6.0 mm radius milling tool long (l = 12 mm)</p> <p>T32 PMMA WAX Zr</p> <p>0,6 mm Ø 6 mm</p> <p>up to 25 mm Blades</p> <p>Art.-No. 526012 0606</p>	<p>T80 - 2.5 6.0 mm drilling tool (l = 22 mm)</p> <p>T80 Ti CoCr</p> <p>2,5 mm Ø 6 mm</p> <p>up to 20 mm Drill</p> <p>Art.-No. 526023 2506</p>
<p>T12/T14 - 1.0 6.0 mm radius milling tool</p> <p>T12 PMMA WAX T14 Zr</p> <p>1,0 mm Ø 6 mm</p> <p>up to 25 mm Blades</p> <p>Art.-No. 526019 1006</p>	<p>T21 - 2.5 6.0 mm radius milling tool (diamond)</p> <p>T21 glass ceramics</p> <p>2,5 mm Ø 6 mm</p> <p>Art.-No. 526005 2506</p>	<p>T33/T43/T53 - 0.3 6.0 mm radius milling tool (conical)</p> <p>T33 PMMA WAX Zr T43 SINT T53 COMP</p> <p>0,3 mm Ø 6 mm</p> <p>up to 25 mm Blades</p> <p>Art.-No. 526019 0306</p>	<p>T81 - 1.5 6.0 mm drilling tool (l = 18 mm)</p> <p>T81 Ti CoCr</p> <p>1,5 mm Ø 6 mm</p> <p>up to 20 mm Drill</p> <p>Art.-No. 526023 1506</p>
<p>T12/T14 - 1.0 6.0 mm radius milling tool</p> <p>T12 PMMA WAX T14 Zr</p> <p>1,0 mm Ø 6 mm</p> <p>up to 25 mm Blades</p> <p>Art.-No. 526019 1006</p>	<p>T21 - 2.5 6.0 mm radius milling tool (diamond)</p> <p>T21 glass ceramics</p> <p>2,5 mm Ø 6 mm</p> <p>Art.-No. 526005 2506</p>	<p>T34 - 3.0 6.0 mm radius milling tool long (l = 27 mm)</p> <p>T34 PMMA WAX</p> <p>3,0 mm Ø 6 mm</p> <p>up to 30 mm Blades</p> <p>Art.-No. 526012 3006</p>	<p>T98 - 2.5 6.0 mm shaft milling tool (l = 20 mm, three blades)</p> <p>T98 CALIBR.</p> <p>2,5 mm Ø 6 mm</p> <p>Blades</p> <p>Art.-No. 526024 2506</p>

Applications

HALF-OPEN BLANK HOLDER (C-CLAMP)

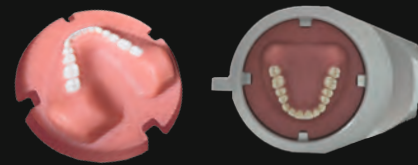
- enables 5-axis machining up to 90 degrees axis adjustment
- Extension of the technical possibilities of your milling machine
- end face machining



one/one+ 150i 250i 250i Loader PRO 350i 350i PRO 350i PRO+ 650i

MANUFACTURE OF DENTAL PROSTHESES

- Baltic Denture from Merzdental
- Dentsply Sirona Dentures



one/one+ 150i 250i 250i Loader PRO 350i 350i PRO 350i PRO+ 650i

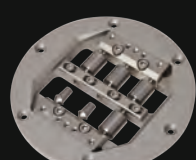
PREFABRICATED ABUTMENTS

- short production times
- Production of abutments in very simple processes
- high accuracy of fit due to prefabricated implant interface

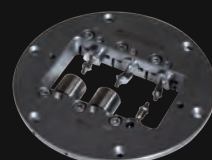
DESS Abutment Holder



NT-Preform® Abutment (nt-trading)



PreFace® Abutment (Medentika)



one/one+ 150i 250i 250i Loader PRO 350i 350i PRO 350i PRO+ 650i

PREFABRICATED SECONDARY PARTS WITH CORTEC ONE

- integrated systems: DESS, nt-trading, Medentika, Dental Direkt
- 360 degree turning possible
- fast set-up time due to Multiadapter



one/one+ 150i 250i 250i Loader PRO 350i 350i PRO 350i PRO+ 650i

THERAPEUTIC SPLINTS

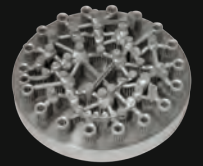
- Bite splints, bleaching splints
- Snoring splints, Aligners
- simple and high-quality implementation in CAD/CAM processes



one/one+ 150i 250i 250i Loader PRO 350i 350i PRO 350i PRO+ 650i

HYBRID MACHINING - SINTERING AND MILLING

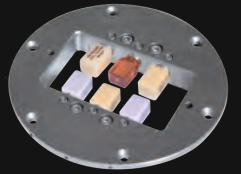
- Milling post-processing of finished restorations using the SLM method
- High precision milling combined with low-cost SLM process
- compatible with most SLM systems



one/one+ 150i 250i 250i Loader PRO 350i 350i PRO 350i PRO+ 650i

GRINDING OF CAD/CAM BLOCKS

- new 6-fold adapter enables effective production
- exchangeable strips for different adapter systems
- Crowns, onlays, inlays, veneers, bridge frameworks, etc.



one/one+ 150i 250i 250i Loader PRO 350i 350i PRO 350i PRO+ 650i

IMPLANT-SUPPORTED BRIDGES AND BARS / ONE-PIECE ABUTMENTS

- highest fitting accuracy due to new CAM technologies (ReFit)
- Stress-free fit even with larger spans
- easy production due to high degree of automation with coordinated CAM software



one/one+ 150i 250i 250i Loader PRO 350i 350i PRO 350i PRO+ 650i

BIOHPP ELEGANCE PREFABS

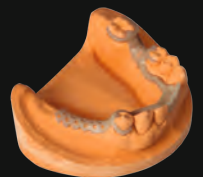
- individual hybrid abutment on PEEK basis
- BioHPP for permanent dentures, free of metal, oxide and monomer
- homogeneous combination of titanium and BioHPP



one/one+ 150i 250i 250i Loader PRO 350i 350i PRO 350i PRO+ 650i

MILLING OF MODEL CASTS

- Production in combustible materials, PEEK or directly in CoCr
- allergy-free and lightweight model casting when using PEEK
- cost-efficient



one/one+ 150i 250i 250i Loader PRO 350i 350i PRO 350i PRO+ 650i

MILLED IMPLANT MODELS

- DIM (Digital Implant Model) from nt-trading
- precisely positionable
- 2-part implant analog



one/one+ 150i 250i 250i Loader PRO 350i 350i PRO 350i PRO+ 650i

MODEL MILLING BAUMANN SYSTEM

- Model fabrication in CAD/CAM process
- high reproducibility and precision
- Model fabrication with digital impression by intraoral scanner



one/one+ 150i 250i 250i Loader PRO 350i 350i PRO 350i PRO+ 650i

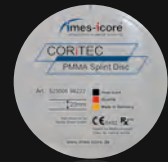
Materials



CORTEC MODEL DISC IVORY

- Blank for the production of dental models
- low-cost material, also suitable for test purposes, or for milling calibration bodies

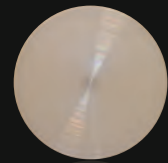
Ø x H (mm)
98 x 15
98 x 20
98 x 25



CORTEC PMMA SPLINT DISC PMMA (POLYMETHYL METHACRYLATE)

- Bite guards, Therapeutic splints, Drilling templates, Bite regulators

Ø x H (mm)
98 x 20



JUVORA PEEK (POLYETHERETHERKETONE)

- clamp-retained constructions
- Juvora PEEK in its basic colour (brown-beige)
- highest biological compatibility

Ø x H (mm)
98 x 16
98 x 20
98 x 25



CORTEC PMMA DISC (POLYMETHYL METHACRYLATE)

- very good mechanical properties
- aesthetic shade effect due to high translucency
- good milling behaviour

Ø x H (mm)
98 x 20



CORTEC ZR HT+ DISC (ZIRCONIUM DIOXIDE, HIGHLY TRANSLUCENT)

- highly translucent zirconium dioxide for natural esthetics
- Increased strength compared to lithium dioxide

Ø x H (mm)
98 x 10
98 x 12
98 x 14
98 x 16
98 x 18
98 x 20
98 x 25



CORTEC ZR DISC (ZIRCONIUM DIOXIDE TRANSLUCENT)

- covers all dental restoration indications up to a width of 16 units

Ø x H (mm)
98 x 10
98 x 12
98 x 14
98 x 16
98 x 18
98 x 20
98 x 25



CORTEC ZR TRANSPA DISC (ZIRCONIUM DIOXIDE)

- covers all indications for dental restorations of up to 16 units

Ø x H (mm)
98 x 10
98 x 12
98 x 14
98 x 16
98 x 18
98 x 20
98 x 25



CORTEC ZR TRANSPA DISC (ZIRCONIUM DIOXIDE PRE-COLORED TRANSLUCENT)

- covers all indications for dental restorations of up to 16 units
- ideally suited for monolithic restorations

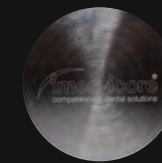
Ø x H (mm)
light, medium, intense, low chromatic, high chromatic
98 x 10
bis
98 x 25



CORTEC WAX DISC (WAX, GRAY)

- CORTEC Wax Disc is not suitable for use in the mouth
- after milling, the material can be used as lost wax moulds can be used in casting technology
- very good millability and residue-free combustion

Ø x H (mm)
98 x 18
98 x 20



CORTEC COCR DISC (NON-PRECIOUS ALLOY)

- Single crowns
- Bridges up to 16 units, full bridges, and PFM technology

Ø x H (mm)
98 x 8
98 x 10
98 x 12
98 x 15
98 x 18



CORTEC COCR MO DISC (NON-PRECIOUS ALLOY)

- Single crowns
- Bridges up to 16 units, full bridges, and PFM technology

Ø x H (mm)
98 x 8
98 x 10
98 x 12
98 x 15
98 x 18



CORTEC TI DISC (GRADE 2, GRADE 4, GRADE 5)

- good mechanical properties
- good milling properties
- corrosion resistant

Grade 2 + 4 Ø x H (mm)	Grade 5 Ø x H (mm)
98 x 10	98 x 10
98 x 15	98 x 12
	98 x 15
	98 x 18

Sales and support partner worldwide

Location

imes-icore® GmbH
Im Leibolzgraben 16
36132 Eiterfeld, Germany

Fon +49 (0) 66 72/898 228
Fax +49 (0) 66 72/898 222
dental@imes-icore.de



Represented for you in over 100 countries.

imes-icore® GmbH has been a leading manufacturer and technology partner since 2003 in the field of dental CAD/CAM systems and solutions.

With its unique range of dental milling and grinding systems imes-icore® offers a perfect selection for all individual requirements of dental laboratories, milling centres and dental practices of all sizes.

Our “Open-System” product philosophy makes it possible to easily integrate our milling machines into your existing workflow and to integrate them with your open scanners and your CAD/CAM software. We are open for your material selection.

**Contact us or
our dealers for
more information
or arrange
your personal
appointment with
imes-icore®.**

Further information can be found under
www.imes-icore.de